

5 Family

Worksheet 1: Family

Using the worksheet

- This reading and writing activity practises family members *mum, dad, brother, sister, grandma, grandpa, uncle, aunt* and *cousin*.
- Pupils draw lines to match the words with the family members in the picture. Then in pairs, they take turns to say a family word for their partner to point.
- Pupils then look at the pictures of the three other family members and trace the word labels.

KEY: 1b, 2a, 3e, 4f, 5d, 6c

Extension 1: Pupils work in pairs and play a memory game. Pupil A points to a sequence of people, e.g. *mum, dad, sister*. Pupil B then says the words.

Extension 2: Before photocopying the worksheet, erase with correction fluid everything except the first letter from the labels in the second group of pictures. Pupils complete the words for the family members.

Optional follow-up activity: Pupil A spells a word out loud, e.g. *M-U-M* and Pupil B says the word, e.g. *mum*. Pupils swap roles. Alternatively, write words on the board as anagrams for pupils to solve.

Worksheet 2: Is that your ... ?

Using the worksheet

- This reading and listening activity practises family members *mum, dad, brother, sister, grandma, grandpa, uncle, aunt* and the language *Is that your ... ?, Yes, it is. No, it isn't. It's my ...*.
- Pupils look at the pictures and guess which word matches the picture. Then read out the following script. Pupils listen and circle the correct words.

TEACHER'S SCRIPT

- 1 Is that your dad? No, it isn't. It's my uncle.
 - 2 Is that your brother? Yes, it is.
 - 3 Is that your grandma? Yes, it is.
 - 4 Is that your sister? No, it isn't. It's my aunt.
 - 5 Is that your grandpa? No, it isn't. It's my grandpa.
 - 6 Is that your mum? Yes, it is.
- Pupils work in pairs. They roll a dice or spin a spinner (see page 5) and ask questions about the corresponding picture, e.g. *Four. Is that your sister?* Encourage pupils to ask questions using both correct and incorrect options to practise both *Yes, it is* and *No, it isn't*.

KEY: 2 brother, 3 grandma, 4 aunt, 5 grandpa, 6 mum

Extension: Before photocopying the worksheet, erase the word options with correction fluid. Pupils listen and write the correct words instead of circling.

Optional follow-up activity: Remind pupils that we use *this* for objects close by and *that* for objects further away. Pupils work in pairs and ask and answer questions using *this* and *that* about objects in the classroom, e.g. *Is this/that your book?*

Worksheet 3: Who's that?

Using the worksheet

- This speaking activity practises *Who's that?, That's my ... , What's his/her name?, His/Her name's ...* and family members *mum, dad, brother, sister, grandma, grandpa*.
- Pupils work in pairs and take turns to point and ask the questions in the speech bubbles. Tell pupils to use names of people in their families or invent names.
- Pupil A then mimes an action from the picture and asks *Who's that?* Pupil B guesses *That's ...*

Reinforcement: Review family member vocabulary as a class before the pairwork by giving instructions, e.g. *Point to Mum* for pupils to point to the picture or a flashcard on the board.

Extension: Pupils repeat the miming activity from memory.

Optional follow-up activity: Draw stick people on the board to represent your own family. Elicit the family members and tell the class their names. Mime an activity and ask *Who's that?* Pupils guess which person in your family does/likes the activity. Pupils do the activity about their own families in pairs or small groups.

Worksheet 4: It's hot.

Using the worksheet

- This craft activity practises weather vocabulary *hot, sunny, cold, snowing, raining, cloudy*.
- Pupils trace the weather words in the circle.
- Pupils cut the two shapes out. Then they make the weather wheel by fixing the 'What's the weather like?' shape over the circle with a butterfly clip. When they turn the top shape, the different weather types will appear one by one.
- Pupils can keep this weather wheel to show the weather for each day and practise *What's the weather like (today)? It's ...*

Optional follow-up activity: Mime getting up in the morning and looking out of the window. Mime how you feel about the weather and putting on the correct clothes for the day. Pupils guess the weather, e.g. *It's hot!* Pupils do similar mimes for their partner to guess.

Basic competences in science and technology

Bring a world map to class or draw a basic outline on the board. Point to Spain and ask *What's the weather like?* Introduce the idea of seasons and how the two hemispheres have opposite seasons. Find out what pupils know about the weather in English-speaking countries (Australia, England, Scotland, the USA) in different seasons.

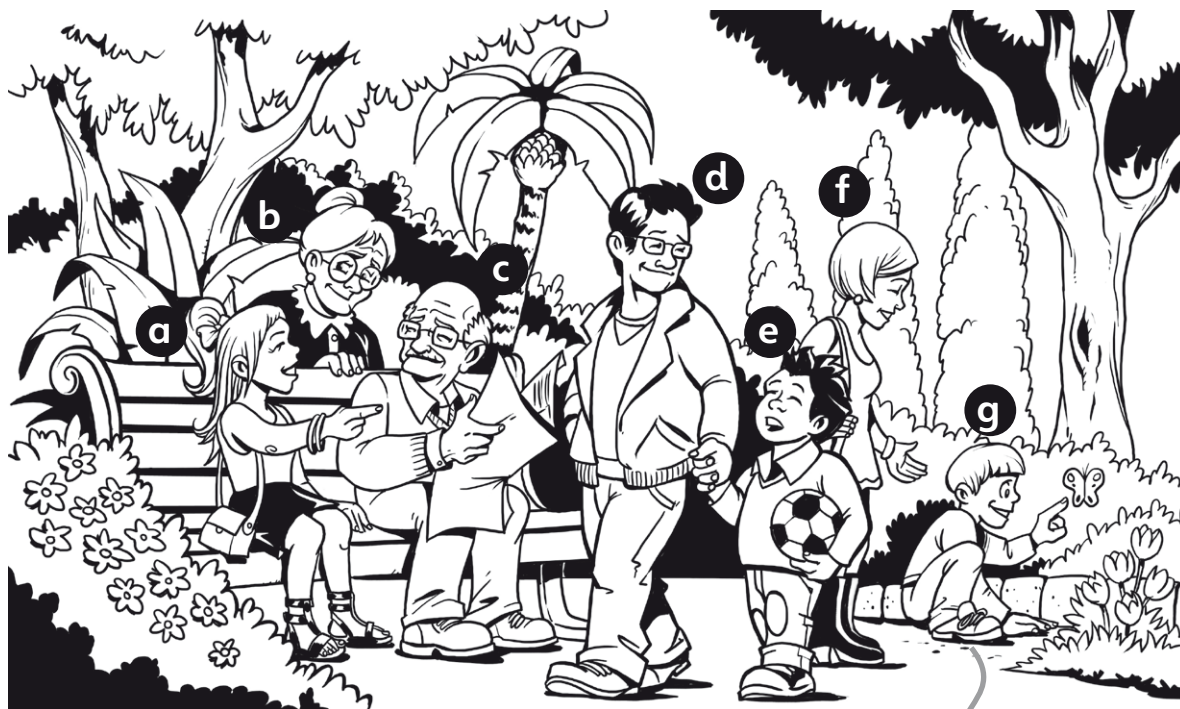
5

Worksheet 1: Family

Name: _____

1 Read and draw lines. Then point and say.

- ① grandma ② sister ③ brother ④ mum



- ⑤ dad ⑥ grandpa ⑦ me

2 Look and trace.



uncle



aunt



cousin

Vocabulary: Family

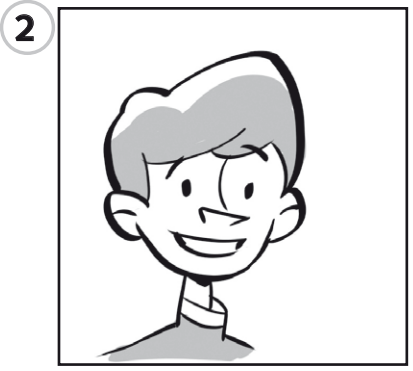
5 Worksheet 2: Is that your ... ?

Name: _____

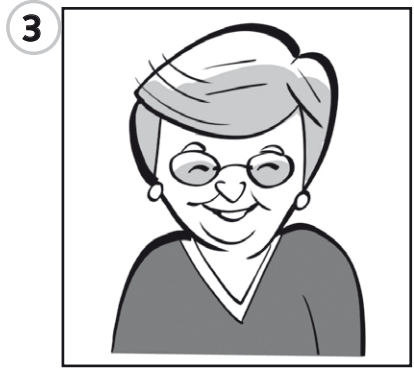
1 Look at the pictures. Listen and circle.



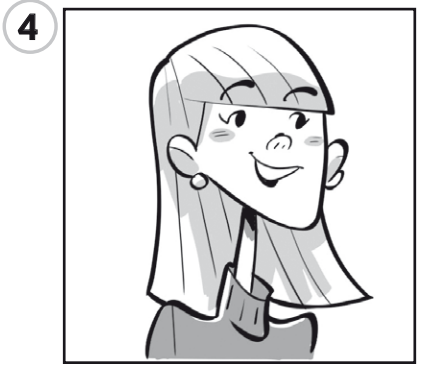
dad
uncle



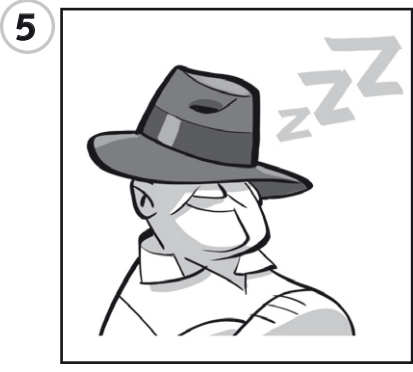
dad
brother



grandma
mum



sister
aunt

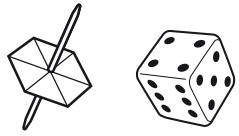


grandma
grandpa



mum
aunt

2 Ask and answer.



Is that your sister?

Yes, it is.

No, it isn't.

Grammar 1: This/That; Is that your ... ?

5

Worksheet 3: Who's that?

Name: _____

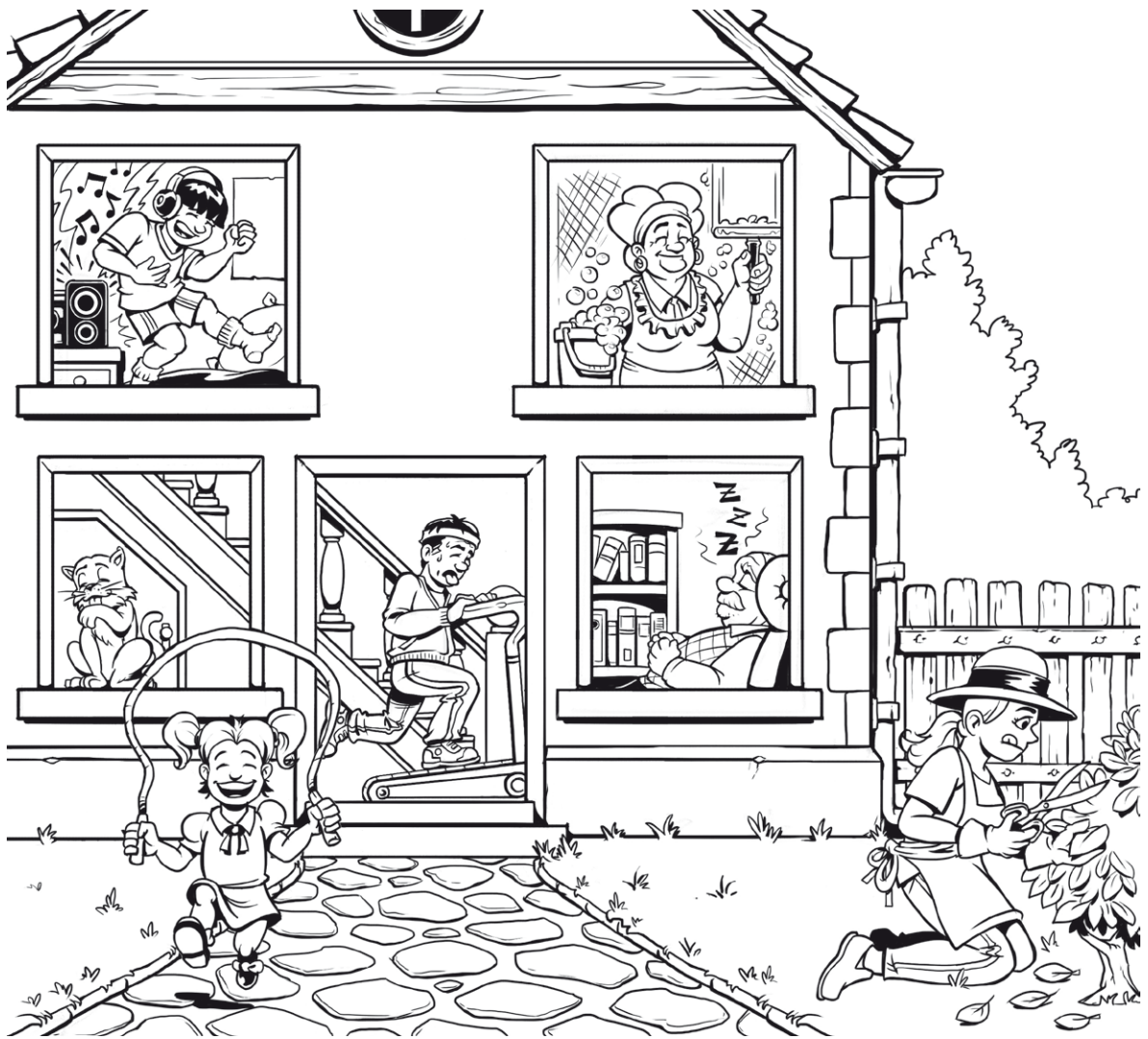
1 Point and ask.

Who's that?

That's my grandma.

What's her name?

Her name's ...



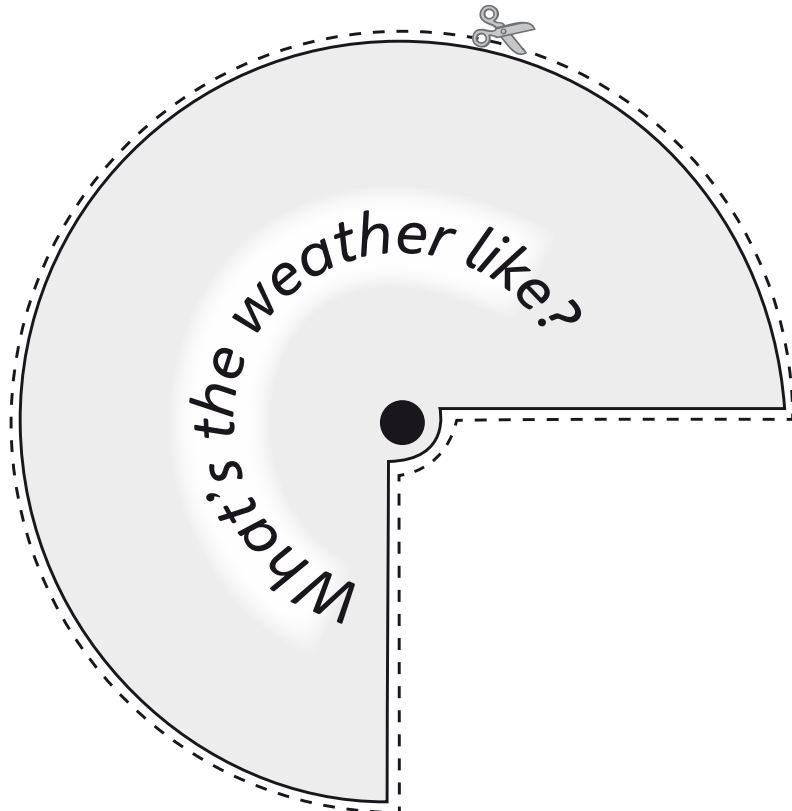
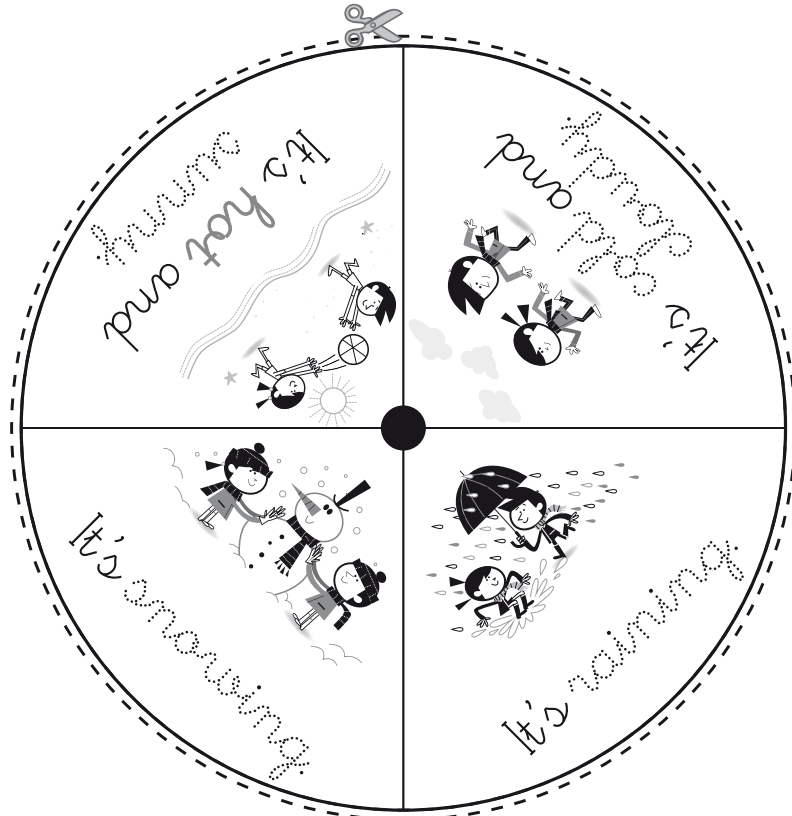
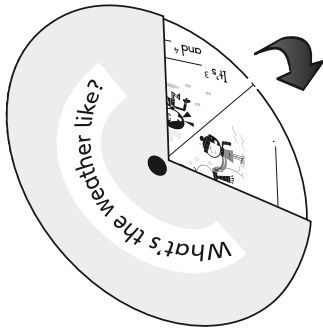
2 Mime and guess.

Grammar 2: *Who's that? What's his/her name?*

5 Worksheet 4: It's hot.

Name: _____

Trace the words. Then make a weather wheel.



Science: Holiday weather